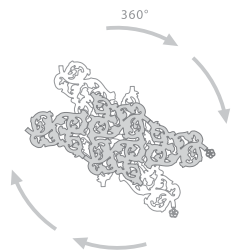


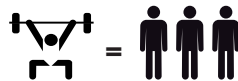
**Uwaga**

Grzejnik Heatwave jest produktem wykonywanym ręcznie. W związku z tym mogą występować drobne różnice koloru lub kształtu grzejnika.

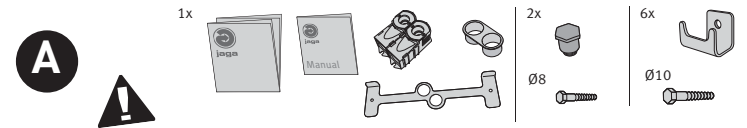
Grzejnik Heatwave można zamontować w dowolnej pozycji - 360°. Pozycja grzejnika przedstawiona w tej instrukcji jest pozycją preferowaną przez projektanta.



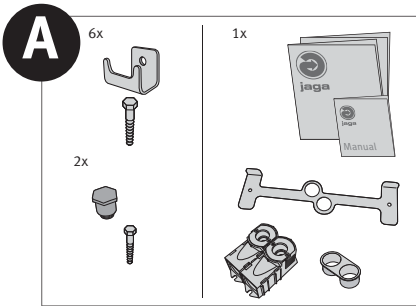
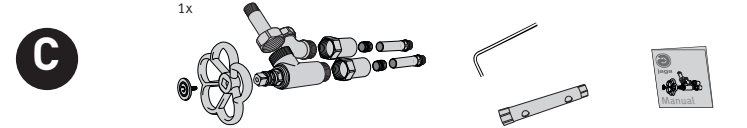
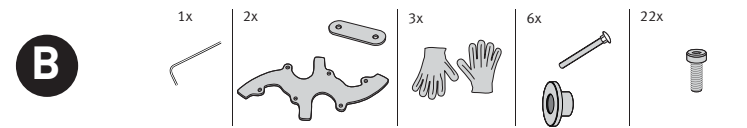
56 kg / 124 lb



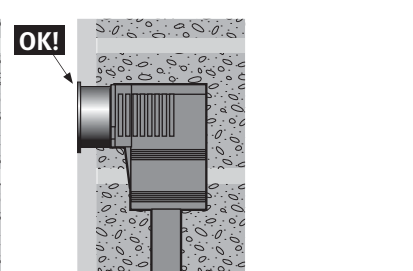
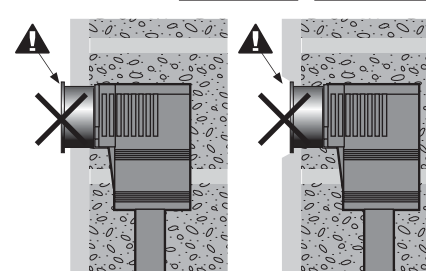
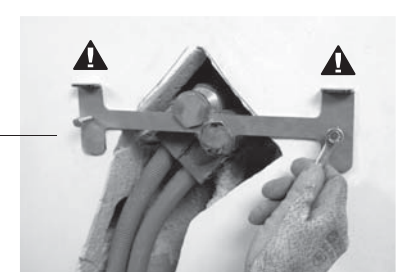
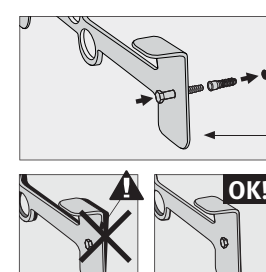
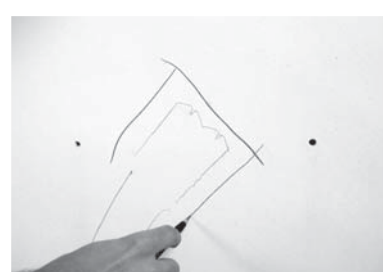
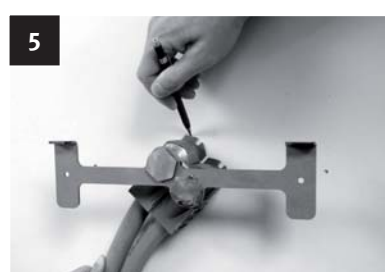
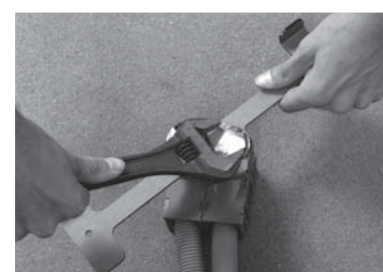
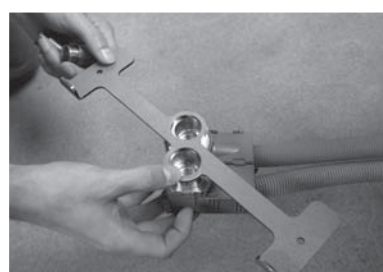
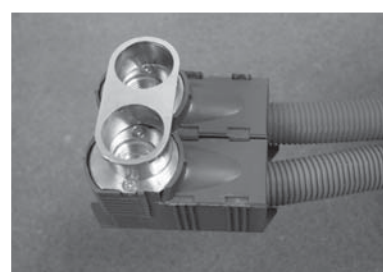
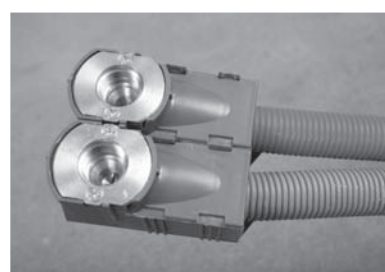
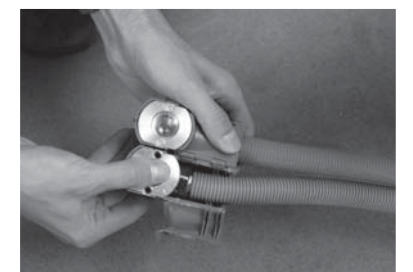
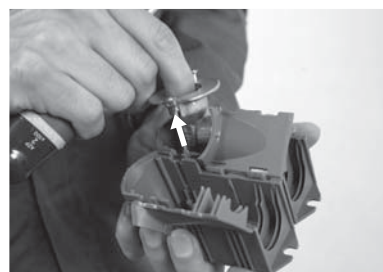
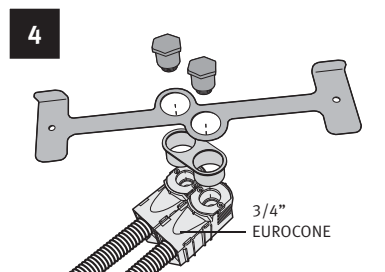
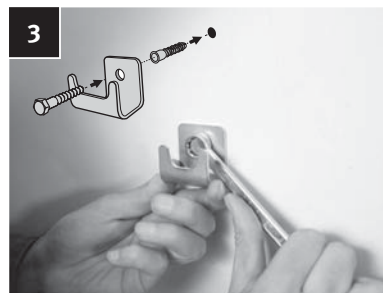
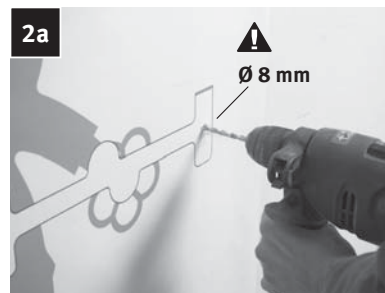
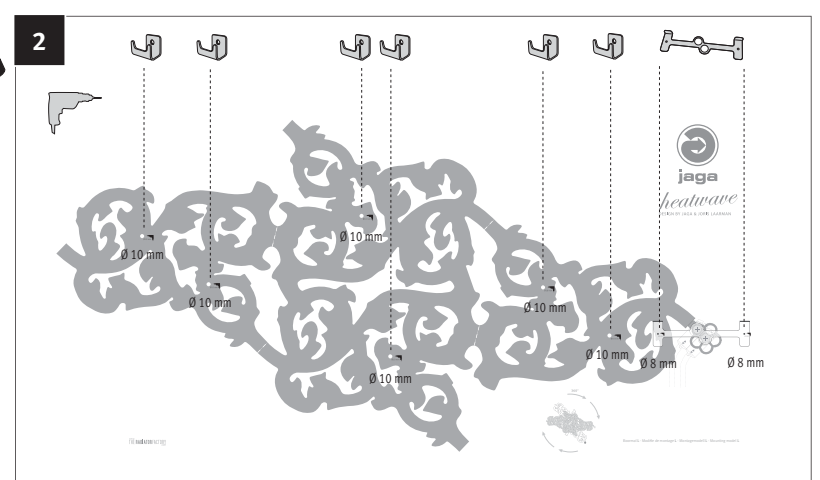
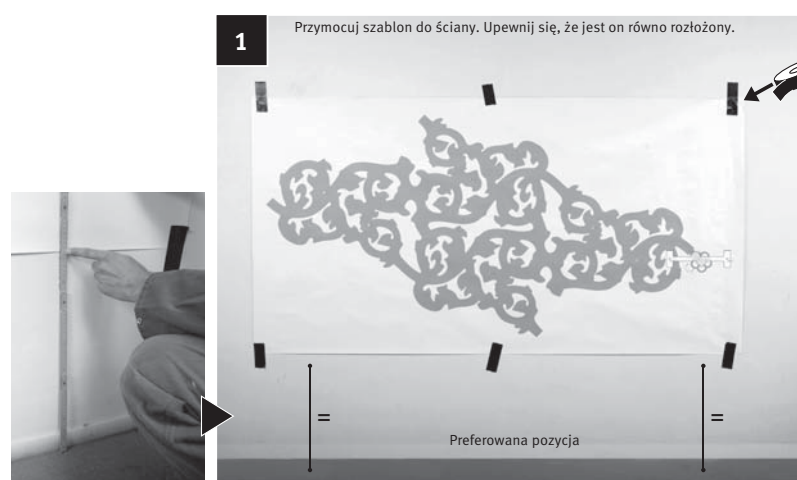
**Onderdelen - Parts - Teile**



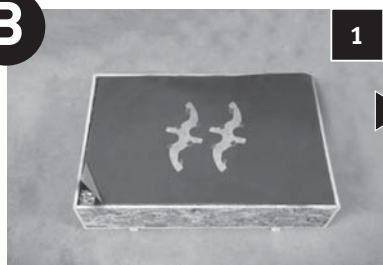
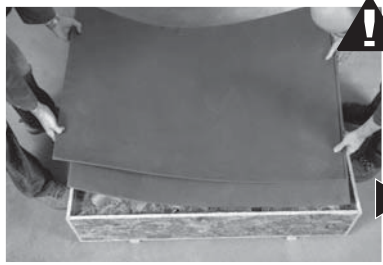
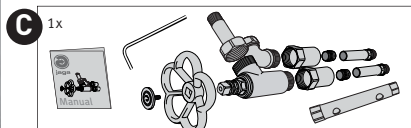
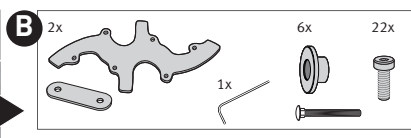
Ze względów bezpieczeństwa nie są dostarczane kołki rozporowe. Skontaktuj się ze swoim specjalistycznym sklepem, aby uzyskać odpowiedni typ.



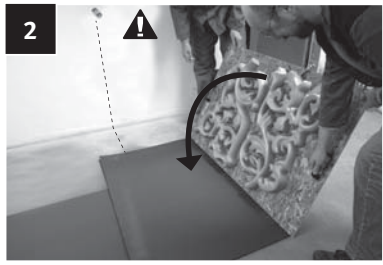
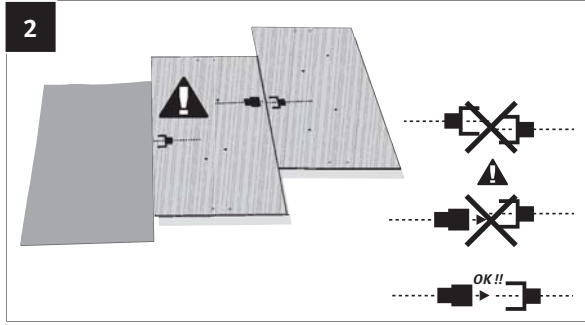
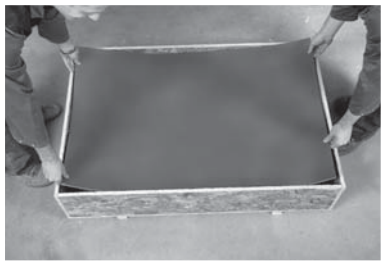
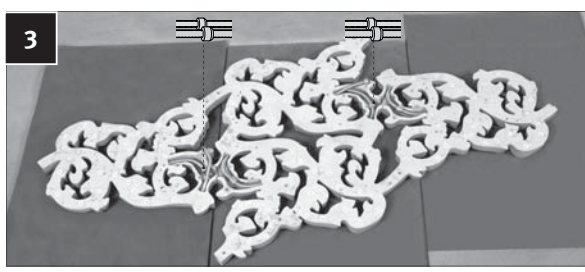
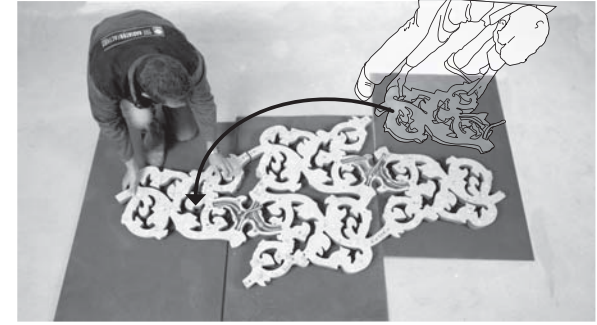
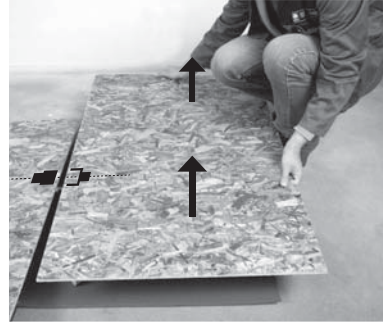
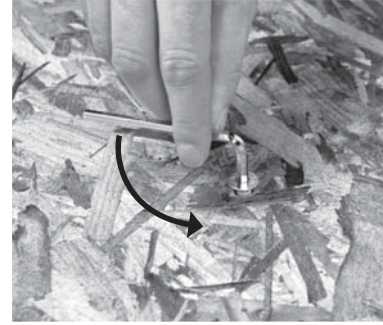
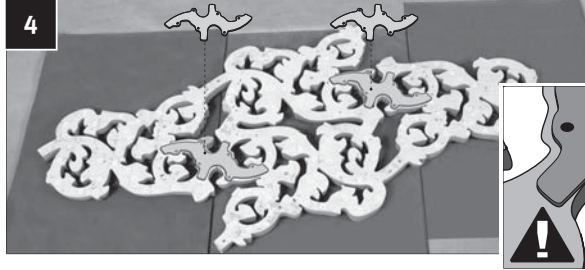
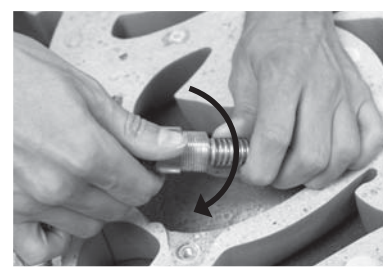
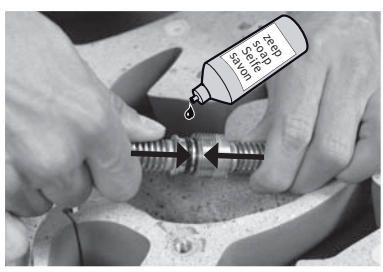
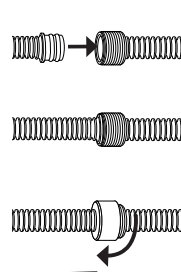
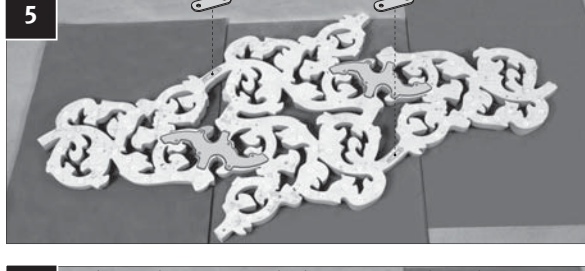
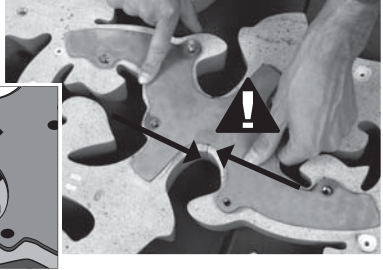
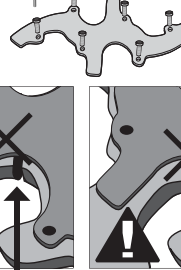
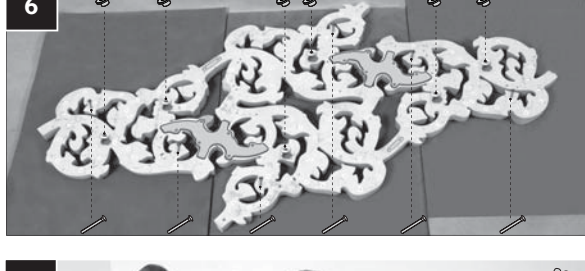
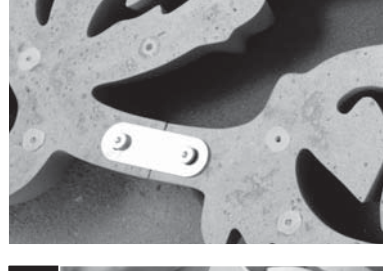
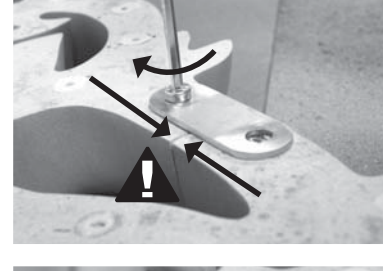
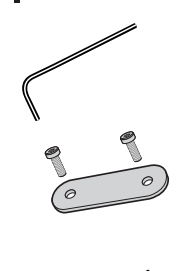
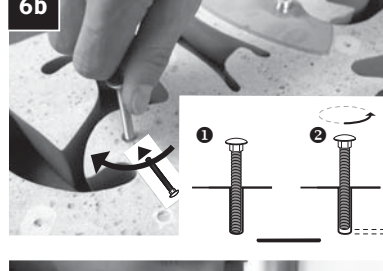
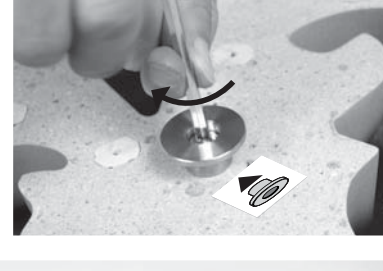
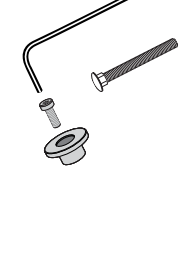
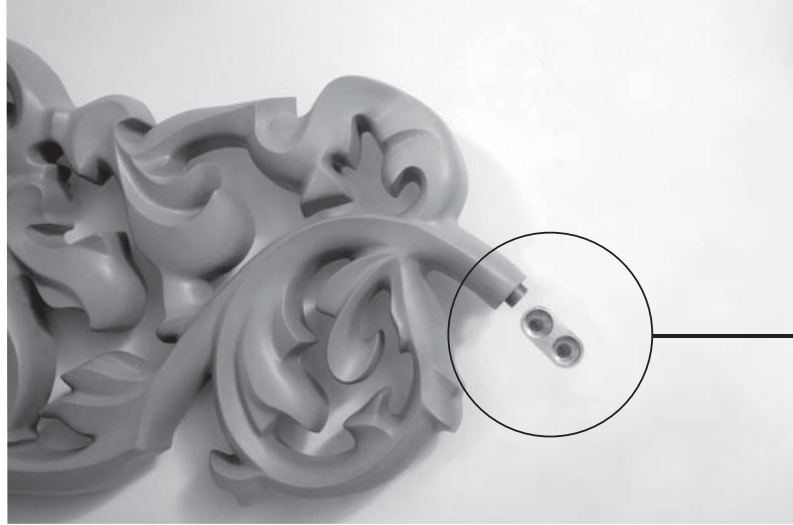
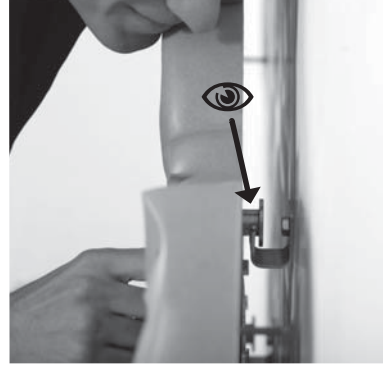
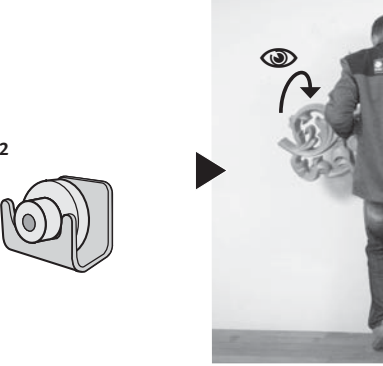
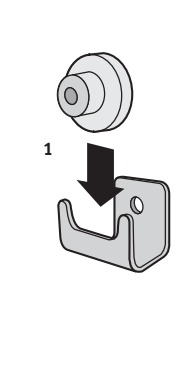
Wypakuj szablony, mocowania i podłączenia zaworu z opakowania.





**B****1****!**

Mata piankowa dostarczona jest z grzejnikiem.  
Prosimy o rozłożenie jej i zmontowanie grzejnika na  
tak przygotowanym podłożu.

**2****2****3****4****5****6****7**

Podłączenie

**C**