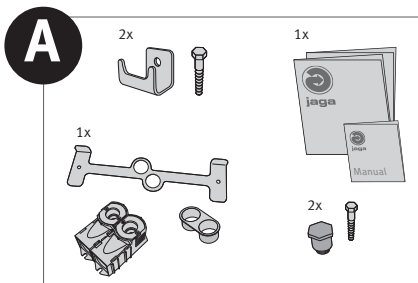
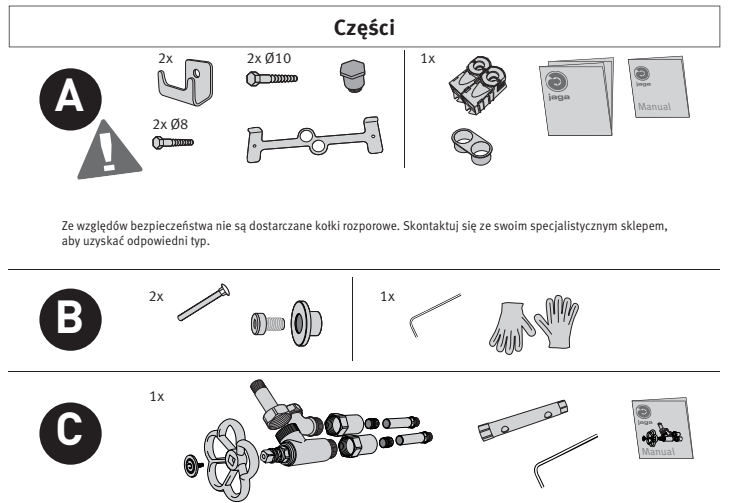


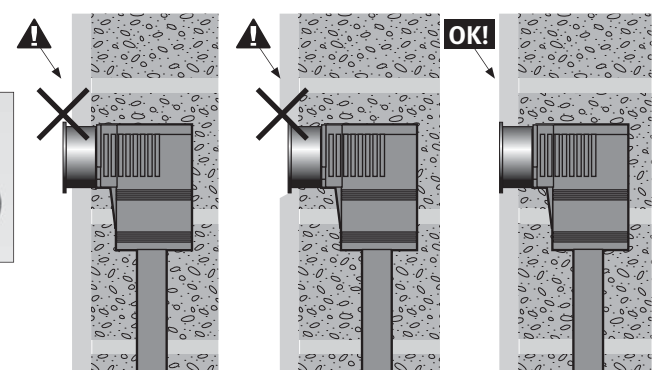
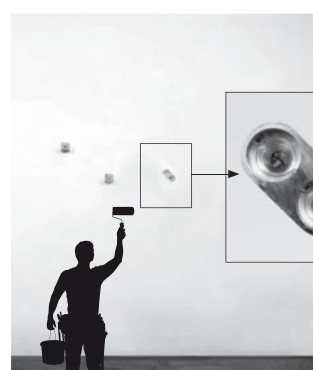
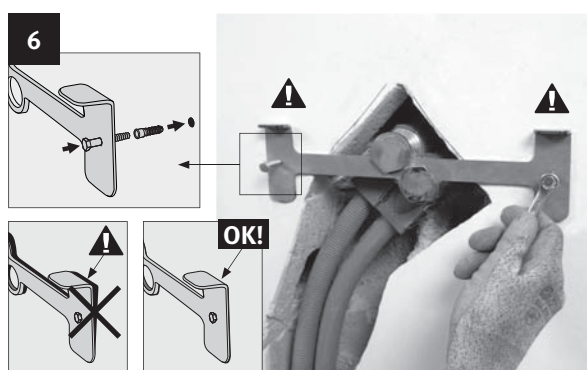
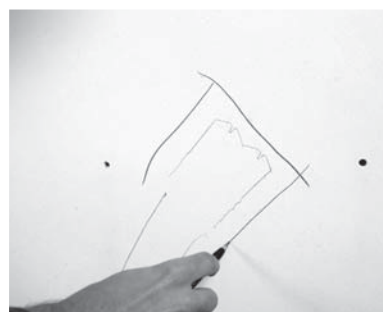
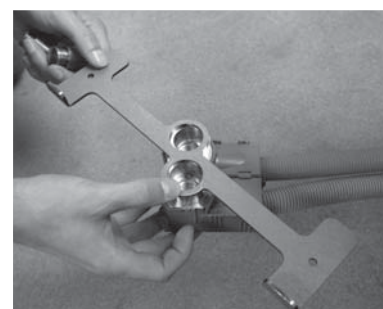
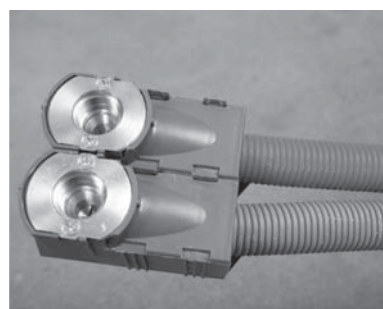
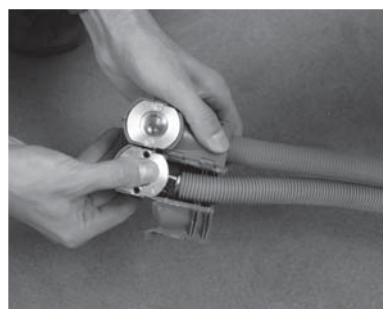
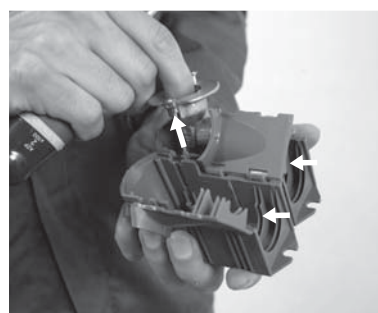
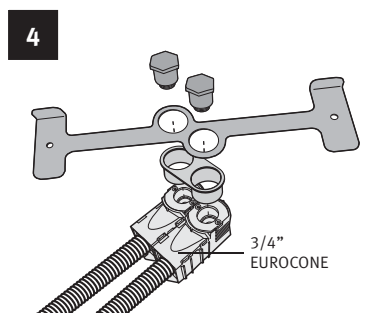
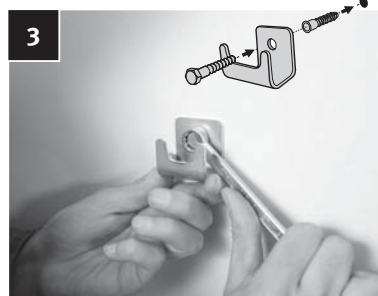
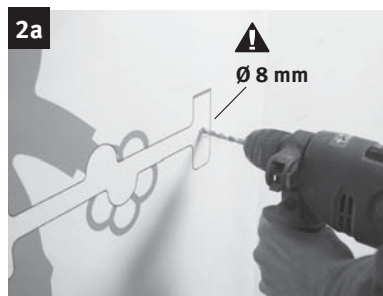
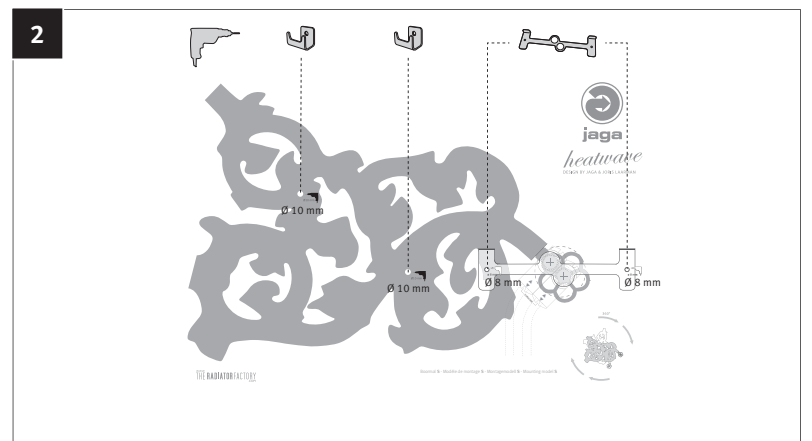
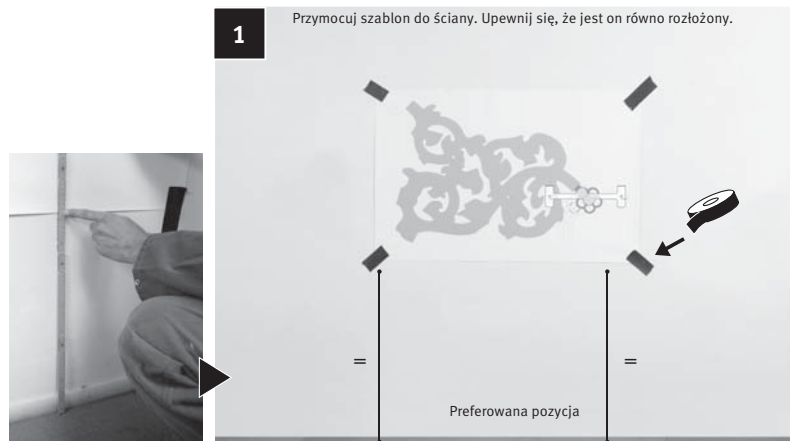
Uwaga

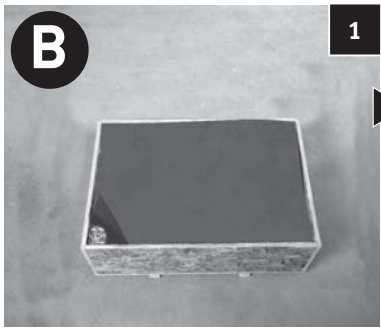
Grzejnik Heatwave jest produktem wykonywanym ręcznie. W związku z tym mogą występować drobne różnice koloru lub kształtu grzejnika.

* Grzejnik Heatwave można zamontować w dowolnej pozycji - 360°.
- Pozycja grzejnika przedstawiona w tej instrukcji jest pozycją preferowaną przez projektanta.

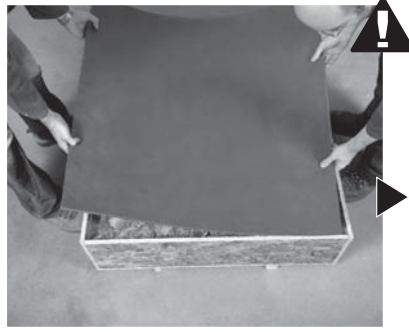
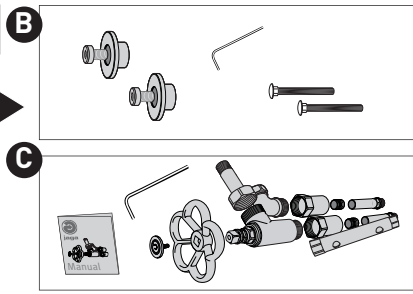


Wypakuj szablon, mocowania i podłączenia zaworu z opakowania.

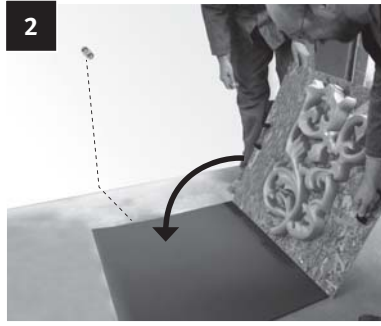




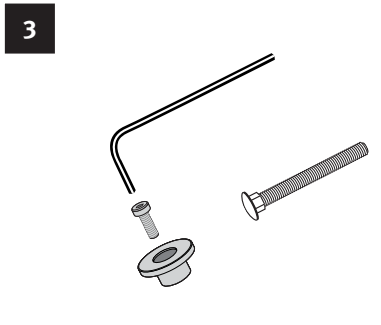
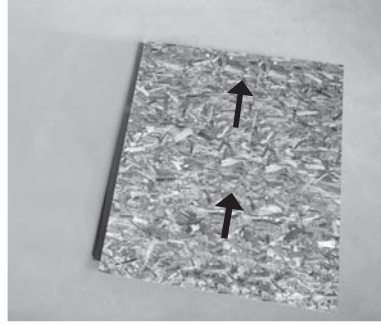
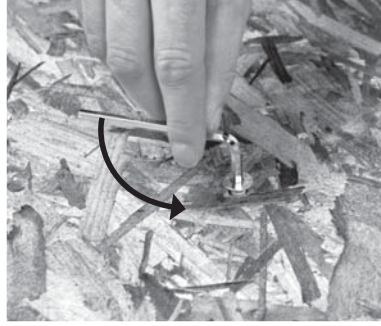
1



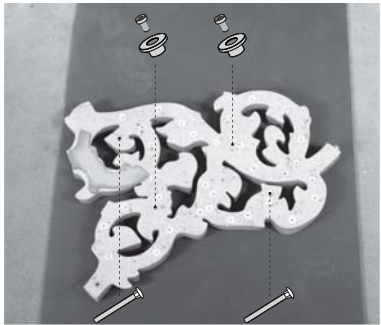
Mata piankowa dostarczana jest z grzejnikiem. Prosimy o rozłożenie jej i zmontowanie grzejnika na tak przygotowanym podłożu.



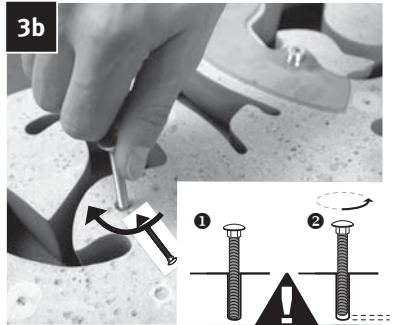
2



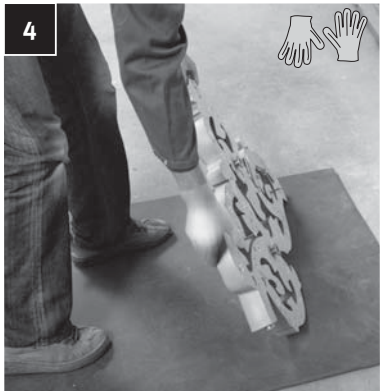
3



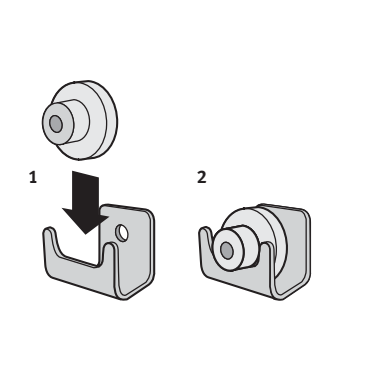
3a



3b

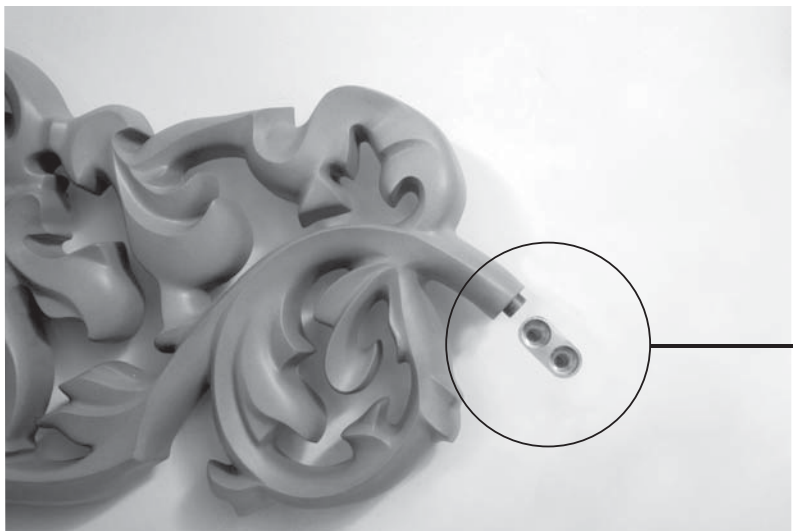
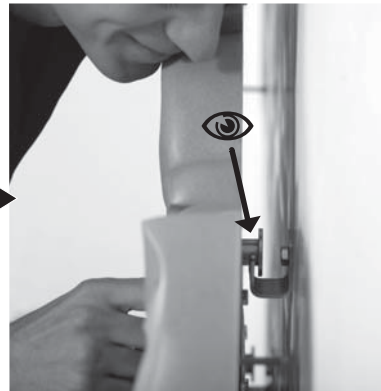


4



1

2



Podłączenie

C

